



Welcome!

To The Paleontological Research Database

The purpose of this page is to present links or directions to good sources on vertebrate animals, with a fossil record, on the web. It is divided into three sections. The first cites magazines and literature, followed by online collection databases and finally additional research sites. If there are any questions feel free to contact the webmaster. There's a link at the bottom of this page.

Magazines and Literature

The site referenced below covers most paleontological periodicals. Or, you can check the table on this page to check for a particular resource. Follow the link to browse their database. (Note: Some journals are on pay only sites or sites only available through an institution. This is a general listing of possible resources on the internet. If you can not link to a site, please try a search engine.)

Vertebrate Paleontology Journal Links (J. Harris)

Magazine	Address
Acta Anthropologica Sinica	
Acta Geologica Sinica	
Acta Palaeontologica Polonica	
Acta Palaeontologica Sinica	
Acta Scientiarum Naturalium	
Acta Stratigraphica Sinica	
Alcheringa	
Ameghiniana	
American Museum Novitates	
Annales De Paleontologie	
Annals of the Carnegie Museum	
Annals of the South African Museum	
Bibliography of Fossil Vertebrates	
Bulletin du Museum national d'Histoire naturelle	
Bulletin of the American Museum of Natural History	
Bulletin of the Peabody Museum of Natural History	

Canadian Journal of Earth Sciences	
Chinese Science Bulletin	
Comptes Rendus Palevol	
Copeia	
Cretaceous Research	
Discover	
Earth Science Journal of the China University of Geosciences	
Evolution	
Geobios	
Geodiversitas	
Geotimes	
Gondwana Research	
Handbook of Paleoherpetology Series	
Journal of Herpetology	
Journal of Mammalian Evolution	
Journal of Mammalogy	
Journal of Paleontology	
Journal of the Academy of Natural Sciences	
Journal of the Royal Society of New Zealand	
Journal of Vertebrate Paleontology	
Journal of Zoological Systematics and Evolutionary Research	
Late Cenozoic Stratigraphy and Paleontology from Central-Southern Region of Shanxi Province	
Lethaia	
Memoires du Museum national d'Histoire naturelle	
National Geographic	
Nature	
Netherlands Journal of Geosciences	
Neues Jahrbuch fur Geologie und Palaontologie-Abhandlungen	
Neues Jahrbuch fur Geologie und Palaontologie – Monatshefte	
New Mexico Museum of Natural History and Science	
Nomen Nudum	
Oryctos	
Palaeogeography, Palaeoclimatology, Palaeoecology	
Palaeontographica	
Palaeontology	
Palaeoworld	
PALAIOS	
Palaontologische Zeitschrift	
Paleobiology	
Paleontological Journal	
Paleontological Research	
Proceedings of the Academy of Natural Sciences of Philadelphia	
Proceedings of the National Academy of Science	
Proceedings of the Royal Society	
Professional Papers on Stratigraphy and Paleontology	
Quaternaria Sinica	
Quaternary Research	
Records of the Australian Museum	

Science	
Science Press	
Scientia Geologica Sinica	
Scientific American	
Scripta Geologica	
Senckenbergiana lethaea	
Society of Vertebrate Paleontology News Bulletin	
Technical Reports of the Australian Museum	
The Palaeontological Association	
Vertebrata Palasiatica	
Zoologica Scripta	
Zoological Journal of the Linnean Society	

Online Collection Databases

These are sites that have on-line collection databases, which can be searched for specific specimen data. This is a great way for the curious or the scientist to locate vertebrates of interest. It also offers a good way to obtain general data on many species.

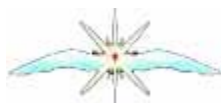
Database	Address
Academy of Natural Sciences (Philadelphia)	
American Museum of Natural History	
Burke Museum (Fossil Vertebrates in the Burke Museum)	
Carnegie Museum of Natural History	
Florida Museum of Natural History	
Natural History Museum (British Museum of Natural History)	
Natural History Museum, University of Oslo	
Natuurhistorisch Museum Rotterdam	
Oklahoma Museum of Natural History	
Polish Academy of Sciences	
San Diego Natural History Museum	
Senckenberg Natural History Museum	
Smithsonian Institution	
The New Mexico Museum of Natural History and Science	
The Sam Noble Oklahoma Museum of Natural History	
The Paleobiology Database	
The University of California, Berkeley	
The University of Texas at Austin (Vertebrate Paleontology Lab)	
University of California Museum of Paleontology	
Yale Peabody Museum	

Other Research Sites

Here are additional sites that offer a vast amount of data on vertebrate paleontology. They are a great asset to the curious when searching for general information.

Site	Address
The Center for North American Herpetology (J. Collins)	
Dino Hunter (Tracy Ford) (check section called "Articles" to find sources for various vertebrates)	
The Dinosauria (Ben Creisler) (not just dinosaurs)	
Mesozoic Eucynodonts (Trevor Dykes)	
Mikko's Phylogenys Archive (Mikko Haaramo)	
North American Fossil Mammal Systematics Database (John Alroy)	
Oceans of Kansas (Mike Everhart)	
Palaeos: The Trace of Life on Earth (Alan Kazlev)	
Paleocene Mammals of the World (Martin Jehle)	
The Plesiosaur Site (Richard Forrest)	
Tree of Life Web Project (University of Arizona)	

To explore the rest of Angellis, click the button below.



Angellis@angellis.net